

For Sale

2.75 Acres- Ideal For Contractors, Outside Storage, Etc.

7221 Willow Lane Hazelwood, MO 63042



Sale Price: \$199,000 (\$1.66/Sq.Ft.)

- Interstate 270 at Lindbergh/Taylor
- Hazelwood Has Designated This Area For Commercial Development In Their Planning
- Outside Storage Allowed
- Flat Land
- All Utilities At Site
- Contractor's Lots, R.V. & Boat Storage etc.

Survey On Back

Contact: Patrick T. McKay
ptmckay@hillikercorp.com

OFFICE • INDUSTRIAL • RETAIL • INSTITUTIONAL • INVESTMENT • MANAGEMENT

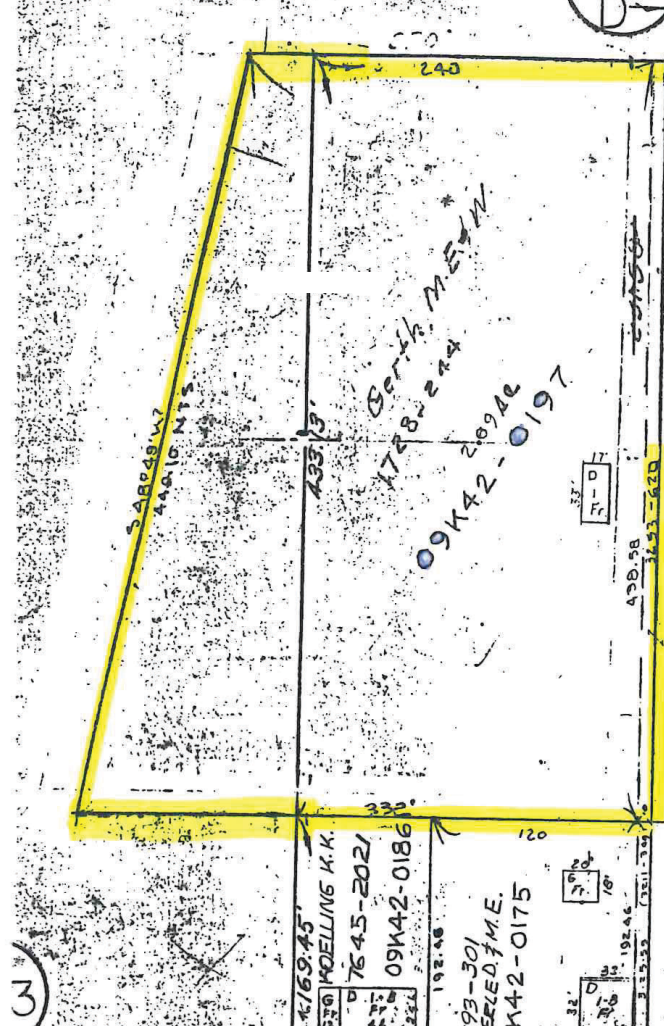
Commercial Real Estate
1401 S. Brentwood Blvd.
Suite 650
St. Louis, MO 63144
www.hillikercorp.com

Information is from appropriate sources but is not guaranteed. No representations is made to environmental or other conditions of property. We recommend purchaser investigate fully.



314-781-0001
Individual Memberships in the Society
Of Industrial and Office Realtors
SIOR

7221 Willow Lane | Hazelwood, MO 63042



OFFICE • INDUSTRIAL • RETAIL • INSTITUTIONAL • INVESTMENT • MANAGEMENT



Commercial Real Estate
1401 S. Brentwood Blvd.
Suite 650
St. Louis, MO 63144
www.hillikercorp.com

314-781-0001

Individual Memberships in the Society
Of industrial and Office Realtors