

For Sale

7± Residential Acres

5658 Hillsboro Rd. (Hwy B)
Hillsboro, MO 63050



For Sale

7± Residential Acres

5658 Hillsboro Rd. (Hwy B)
Hillsboro, MO 63050

7± Residential Acres Sale Price: \$102,500

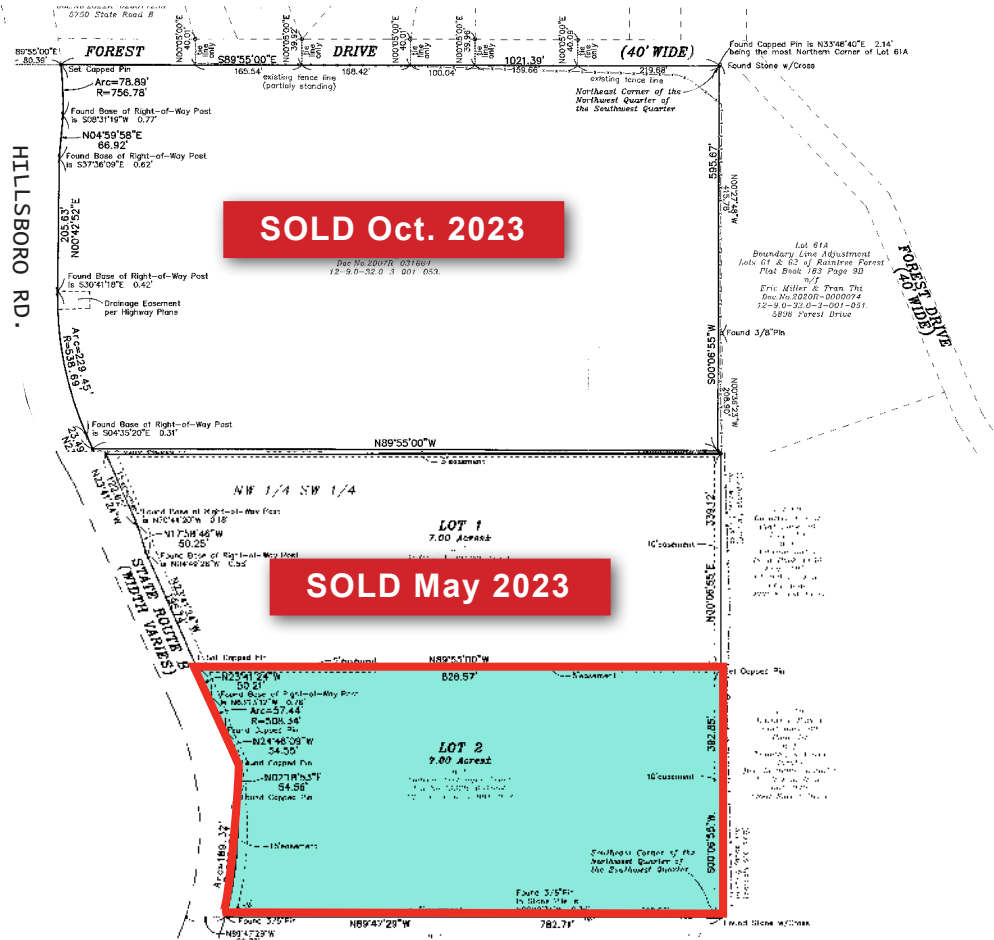
- Gentle Building Site
- 4 Minutes from HWY 21
- Natural Setting
- Common-Sense Restrictions

Contact: Jeff Price
jprice@hillikercorp.com



BOUNDARY SURVEY

PART OF THE NORTHWEST QUARTER OF THE SOUTHWEST QUARTER OF
SECTION 32, TOWNSHIP 41 NORTH, RANGE 4 EAST
Jefferson County, Missouri



Office Industrial Retail Institutional Investment Management



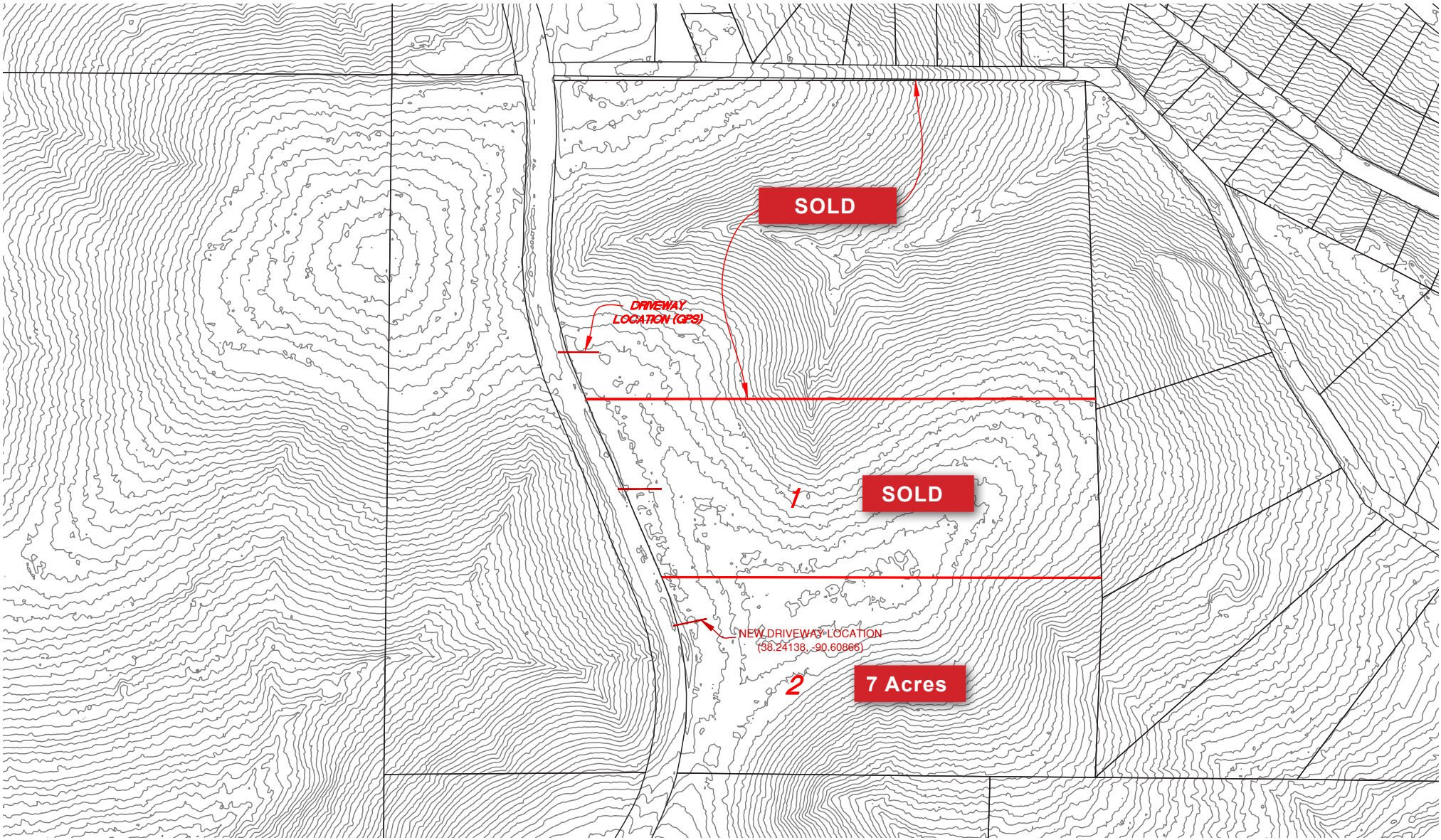
Commercial Real Estate
1401 S. Brentwood Blvd.
Suite 650
St. Louis, MO 63144
www.hillikercorp.com



314-781-0001

Individual Memberships in the Society
of industrial and Office Realtors

Information is from appropriate sources but is not guaranteed. No representations is made to environmental or other conditions of property. We recommend purchaser investigate fully.



Office

Industrial

Retail

Institutional

Investment

Management



Commercial Real Estate
 1401 S. Brentwood Blvd.
 Suite 650
 St. Louis, MO 63144
www.hillikercorp.com



314-781-0001

Individual Memberships in the Society
 of Industrial and Office Realtors

Information is from appropriate sources but is not guaranteed. No representations is made to environmental or other conditions of property. We recommend purchaser investigate fully.