

FOR SALE/LEASE

Historic Bank Bldg./Office Space/Development Site



HILLIKER

CORPORATION®

2604-2614 S. Jefferson Ave. St. Louis, MO 63118

- 2300, 2306, 2310 and 2612 Sidney Street
- 2615 Indiana St. Louis, MO 63118
- 1.48 Acre Site- 28,331 Gross Sq. Ft. Offices & Bank

28,331 Total Building Sq. Ft.

- High Visibility Corner At Jefferson, Gravois, And Sidney
- Historic Bank Building With High Ceilings And Original Elements
- Bank Bldg. 7,176 Sq. Ft. Plus ATM
- Available For Another Bank
- Great Space For Financial Services Company/Stock Brokerage Firm
- Beautiful Historic Bank With original Vaults.

18,112 Sq. Ft. Offices For Owner/User/Development

- **Great Multi-Tenant/Co-Working Building**
- Reception Area
- Numerous Private Offices
- Conference Room
- Kitchen Break Area
- Large Training-Demonstration Room
- Several Restrooms
- Newer Roof

1.0± Acre Prime Development Site

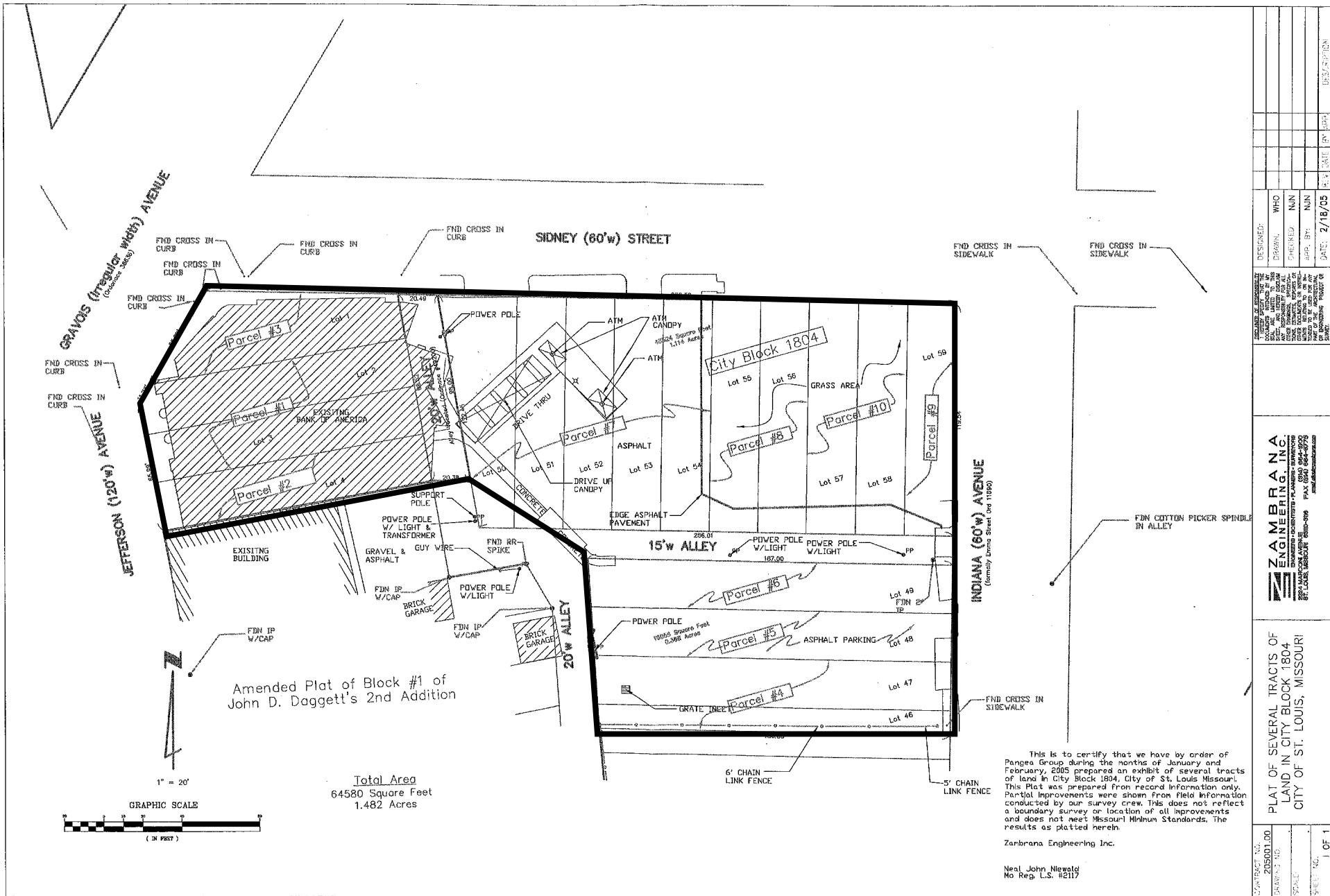
- Ideal For New Apartment Construction
- 60 + Units Estimated
- High Growth And Demand Area

FOR SALE \$1,900,000.00
(\$67.06/Sq. Ft.)

LEASE RATE: Contact Broker

Contact: Patrick T. McKay
ptmckay@hillikercorp.com





DESIGNED BY:	WHO:	
DRAWN BY:	CHKD BY:	
CHECKED BY:	APP. BY:	
DATE:	2/18/05	
PROJECT NO.:		
DATE:		
SCALE:		
SHEET NO.:		1 OF 1

PLAT OF SEVERAL TRACTS OF LAND IN CITY BLOCK 1804 CITY OF ST. LOUIS, MISSOURI

ZABRANA ENGINEERING INC.
10000 S. MARYLAND AVE. ST. LOUIS, MISSOURI 63143-2906 FAX: 314-781-0001
www.zabranaeng.com



Commercial Real Estate
1401 S. Brentwood Blvd.
Suite 650
St. Louis, MO 63144
www.hillikercorp.com



314-781-0001
Individual Memberships in the Society
of industrial and Office Realtors