

# For Sale

## 49,350± Sq. Ft. Rail & Crane Served Building

Rail Car Spaces in Building

4% to Procuring Broker



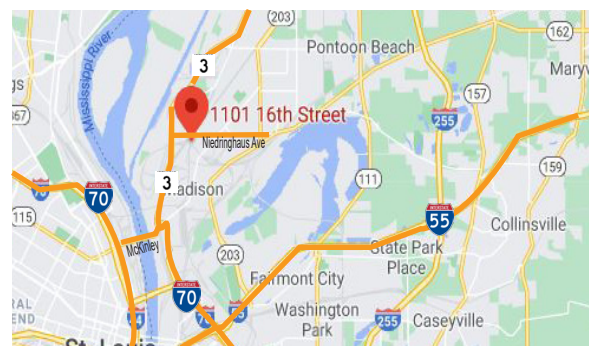
**1101 16th Street  
Granite City, IL 62040**

Sale Price: ~~\$987,000.00~~

Reduced Sale Price: **\$887,000.00**  
(\$17.97/Sq. Ft.)

Contact: **H. Meade Summers**

- Interior Rail Spur T.R.R.A.
- One (1)-10 Ton Crane
- One (1)-15 Ton Crane
- Four (4) 14' Drive-In Doors
- Sprinklered
- 1,350± Sq. Ft. Office Finish
- 2± Acre Site. Heated Warehouse
- Additional Land to Lease Possible
- Convenient to St. Louis, via McKinley Bridge




Office Industrial Retail Institutional Investment Management

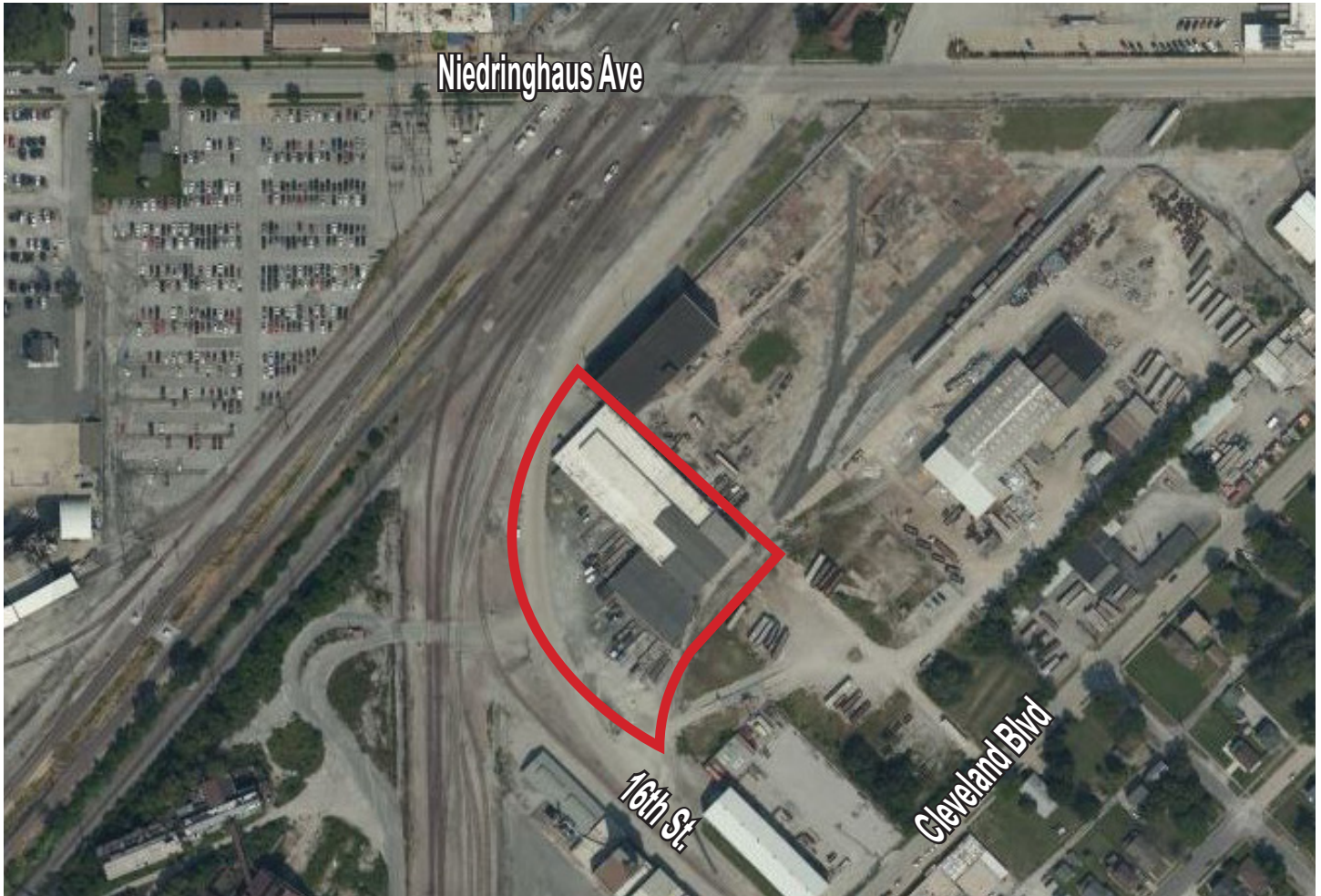


Commercial Real Estate  
1401 S. Brentwood Blvd.  
Suite 650  
St. Louis, MO 63144  
[www.hillikercorp.com](http://www.hillikercorp.com)

**314 781 0001**

 Individual Membership in the Society  
of Industrial and Office Realtors

# For Sale




Office Industrial Retail Institutional Investment Management



Commercial Real Estate  
1401 S. Brentwood Blvd.  
Suite 650  
St. Louis, MO 63144  
[www.hillikercorp.com](http://www.hillikercorp.com)

314 781 0001

 Individual Membership in the Society  
of Industrial and Office Realtors

Information is from appropriate sources but is not guaranteed. No representation is made to environmental or other conditions of property. We recommend purchaser investigate fully.