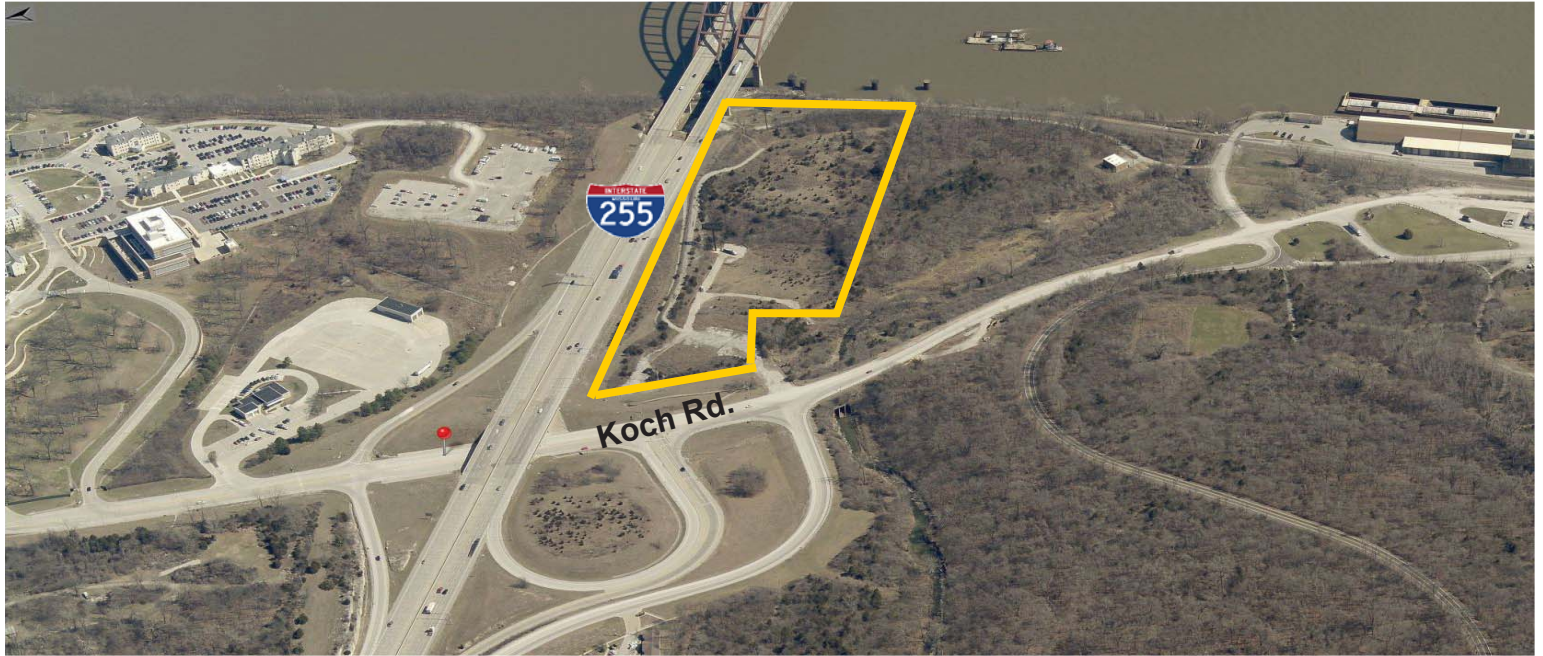


# For Sale

## 11.61± Acres Land



**3800 Koch Rd.  
St. Louis, MO 63129**

**Sale Price: \$1,495,000.00**

**Contact: Patrick T. McKay  
H. Meade Summers**

- **Mississippi River Frontage and Access**
- **4- River Pylon Barge Moorings**
- **Zoned M-1- St. Louis County**
- **I-255 @ Jefferson Barracks Bridge**
- **2-Billboards on Property Leased to Drury Displays**
- **Utilities to Site**
- **Four-way Interchange e I-255**



**Office Industrial Retail Institutional Investment Management**



Commercial Real Estate  
1401 S. Brentwood Blvd.  
Suite 650  
St. Louis, MO 63144  
[www.hillikercorp.com](http://www.hillikercorp.com)

**314 781 0001**



Individual Membership in the Society  
of Industrial and Office Realtors

Information is from appropriate sources but is not guaranteed. No representation is made to environmental or other conditions of property. We recommend purchaser investigate fully.