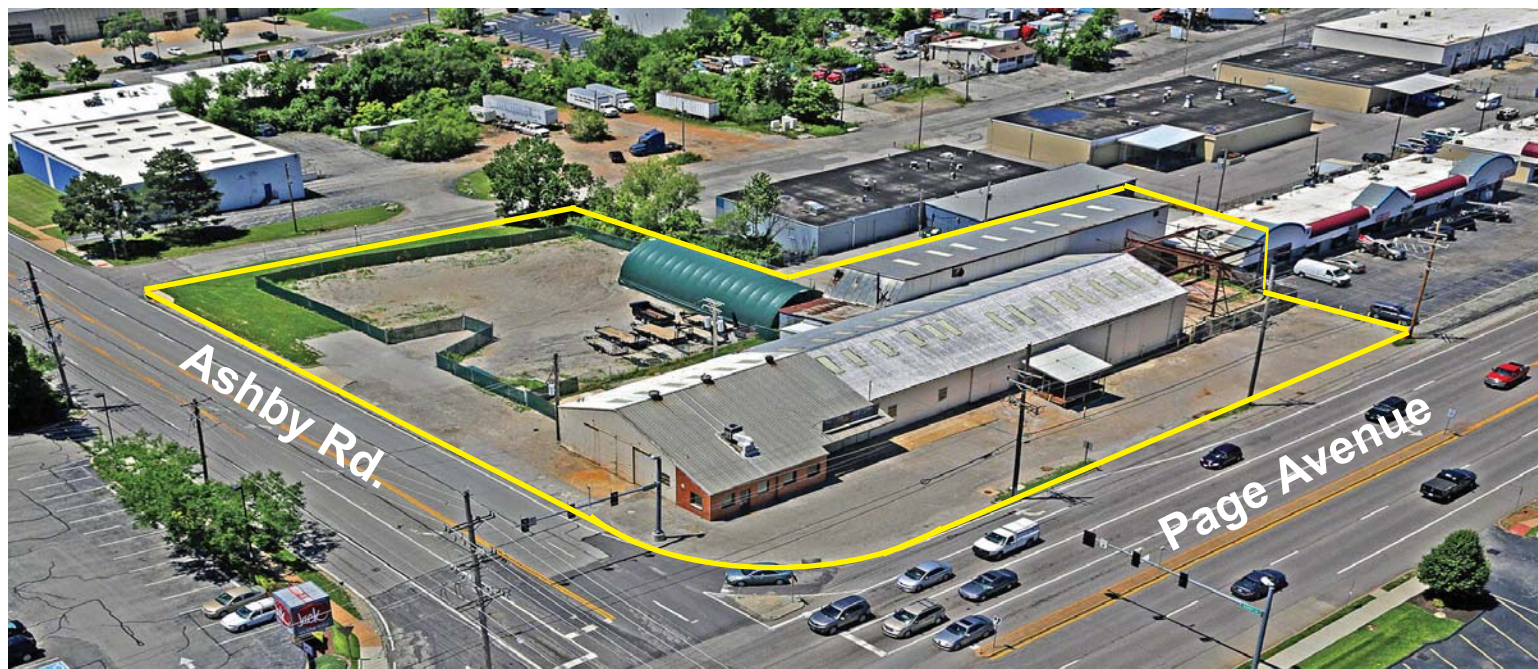


For Sale or Lease

Prime Redevelopment Site 1.8± Acres



**10500 Page Avenue
St. Louis, MO 63132**

Sale Price: \$1,150,000.00

Lease Rate: \$9,500/Month,NNN

**Contact: Patrick T. McKay
William Meehan**

- Great Hard Corner at Stoplight
- Unincorporated St. Louis County
- Zoned: Commercial C-7
- Perfect Location for Fast Food, Urgent Care, C-Store/Gas, Bank, Carwash or Other Retail Development
- 270' of Page Ave. Frontage
- Possible 2-Tenant Site



Office

Industrial

Retail

Institutional

Investment

Management



Commercial Real Estate
1401 S. Brentwood Blvd.
Suite 650
St. Louis, MO 63144
www.hillikercorp.com

314 781 0001



Individual Membership in the Society
of Industrial and Office Realtors